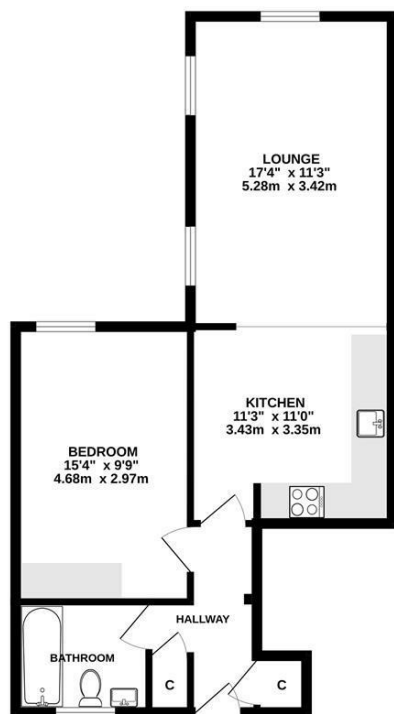




**Keith
Ashton**

8 Ingrave Road, Brentwood
Essex

FIRST FLOOR
574 sq.ft. (53.3 sq.m.) approx.



TOTAL FLOOR AREA: 574 sq.ft. (53.3 sq.m.) approx.
Measurements are approximate. Not to scale. Illustrative purposes only.
Made with Metropis ©2025

£330,000

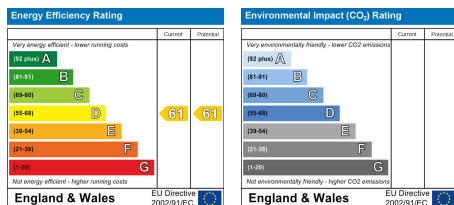
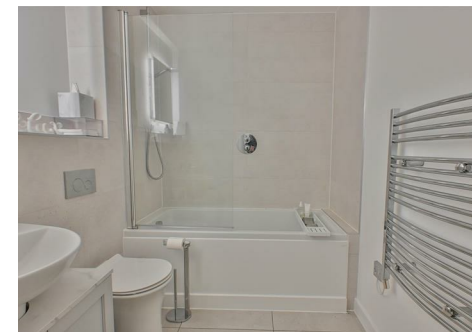


45 Ingrave House 8 Ingrave Road, Brentwood, Essex, CM15 8TG

Nestled in the heart of Brentwood, this beautifully presented apartment offers the perfect combination of style, comfort, and convenience. With its attractive exterior and well-maintained setting, the property provides a warm and welcoming first impression.

Inside, the apartment is tastefully decorated throughout, featuring spacious and light-filled living areas ideal for both relaxation and entertaining. The thoughtfully designed open-plan lounge and kitchen benefit from dual-aspect windows, providing an abundance of natural light. The modern kitchen is well-equipped with quality fittings and ample space for food preparation, while the adjoining living area offers an inviting space for dining or unwinding. The property comprises a generous double bedroom with fitted wardrobes and plenty of room for additional furnishings. A stylish, contemporary bathroom completes the accommodation, finished to a high standard with a white suite including WC, wash hand basin, and bath with overhead shower.

Externally, the property enjoys secure gated allocated parking and access to a communal roof terrace, perfect for relaxing or enjoying the surroundings.



SERVICES:

Local Authority: Essex
Council tax band: C
Post code: CM15 8TG

VIEWING:

Strictly by prior arrangement with Keith Ashton Estate Agents

OPENING HOURS:

Monday to Friday: 8.45AM - 6.30PM | Saturdays: 9AM - 5.30PM | Sundays: 10AM - 2PM

MORTGAGE INFORMATION:

We offer the additional facility of an in-house Independent Financial Adviser who will access all mortgage lenders with the purpose of providing you with the benefit of choice. For quotations or comparables please call 01277 260858 or visit our interactive website at www.mortgagebusiness.net



We the Agent have not tested any apparatus, fittings or services for this property. The plot size is intended merely as a guide and has not been officially measured or verified by the Agent. Photographs are for illustration only and may depict items which are not for sale or included in the sale of the property. As part of the service we offer we may recommend ancillary services to you which we believe may help you with your property transaction. We wish to make you aware, that should you decide to use these services we will receive a referral fee. For full and detailed information please visit 'terms and conditions' on our website www.keithashton.co.uk

Brentwood
Tel. 01277 260858

Village Office
Tel. 01277 375757

Lettings Office
Tel: 01277 202200

Explore more @ www.keithashton.co.uk

